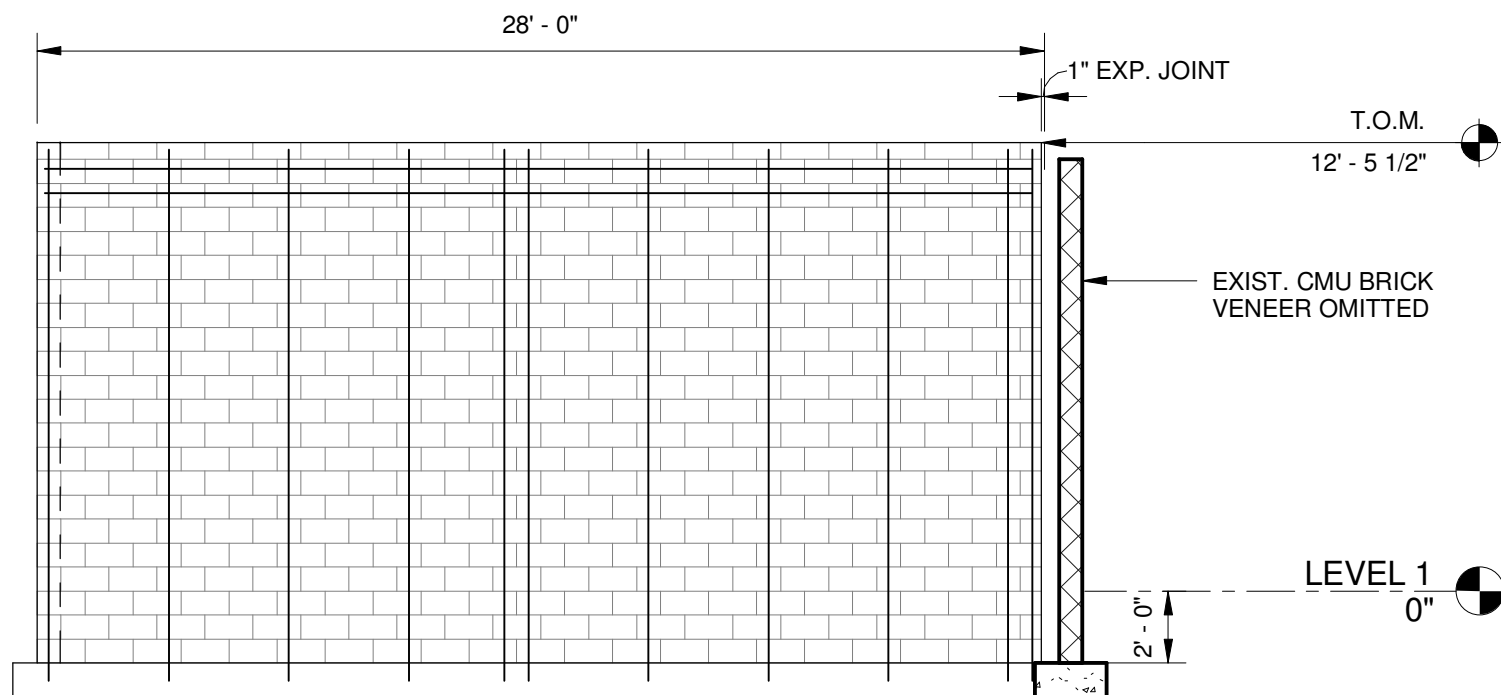


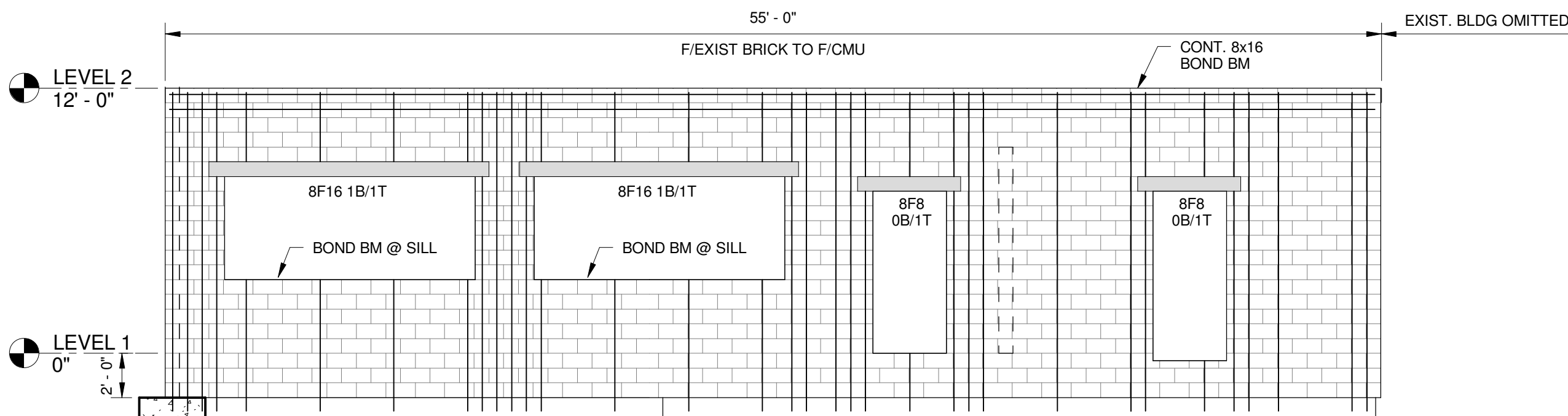
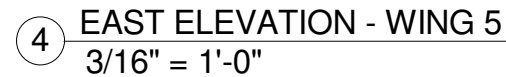
1 EAST ELEVATION - WING 3  
3/16" = 1'-0"



② NORTH ELEVATION - WING 3  
3/16" = 1'-0"

③ WEST ELEVATION - WING 3  
3/16" = 1'-0"

## WING 3 - ELEVATIONS



5 NORTH ELEVATION - WING 5  
3/16" = 1'-0"

6 WEST ELEVATION - WING 5  
3/16" = 1'-0"

## WING 5 - ELEVATIONS



**PINDER-MARTIN  
ASSOCIATES, INC**  
1001 N. 12th AVENUE  
PENSACOLA, FL 32501  
850-439-9110

AA26000896

PROJECT:  
5 CLASSROOM ADDITION

LOCATION:  
WEST NAVARRE INTERMEDIATE  
SCHOOL  
1970 COTTON BAY LANE  
NAVARRE, FL 32566

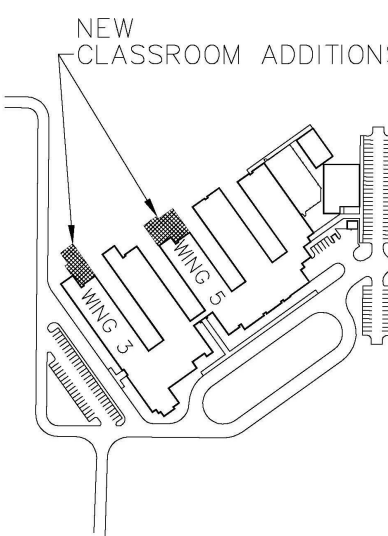
CONSULTANTS:

JEHLE-HALSTEAD INC  
49 EAST CHASE STREET  
PENSACOLA, FL 32502

CRAFT & WEBSTER  
STRUCTURAL ENGINEERS, INC.  
129 HIGHPOINT DRIVE  
GULF BREEZE, FL 32561

GULF BREEZE CONSULTING, INC.  
139 EAST GOVERNMENT STREET  
PENSACOLA, FL 32502

ADAMS CONSULTING  
ENGINEERING, INC.  
3 WEST GARDEN STREET - SUITE 382  
PENSACOLA, FL 32502

WEST NAVARR  
INTERMEDIATE[illegible]

DRAWN BY:	Author
CHECKED BY:	Checker
C&W S E	
PROJECT #:	11-046
REVIEW:	09-06-
PERMITTING:	09-09-
RELEASE FOR BIDDING:	09-19-

## ELEVATIONS WING 3 & 5